
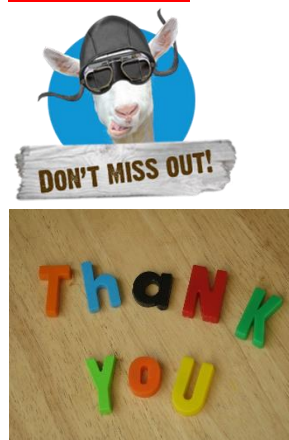


**Coming Up This Week:**

When	Program	Time	Location	Cost
Monday, Nov. 11	CLOSED FOR REMEMBRANCE DAY		ALL	
Tuesday, Nov. 12	Protecting Your Portfolio	9:30 am – 11:30 am	YECC	\$2.00
Tuesday, Nov. 12	Coffee and Chat	9:30 am – 12 pm	YECC	Donation
Tuesday, Nov. 12	Watercolors	12:30 pm – 2:30 pm	YECC	\$97.50
Tuesday, Nov. 12	Hand and Foot Canasta	12:30 pm – 3 pm	YECC	\$2.00
Tuesday, Nov. 12	Choir	<b>12:45 pm – 1:45 pm</b>	YECC	\$10.00
Tuesday, Nov. 12	ESSETRICS for Seniors	1 pm – 1:45 pm	eOne	\$10.00
Wednesday, Nov. 13	American Mahjong	9:30 am – 11:30 am	YECC	\$2.00
Wednesday, Nov. 13	Bus Trip: Lunch and a Movie	11 am – 3 pm	Off-site	<b>FULL</b>
Wednesday, Nov. 13	Contract Bridge	12:30 pm – 3 pm	YECC	\$2.00
Wednesday, Nov. 13	ESSETRICS/Cardio	1 pm – 2 pm	eOne	\$10.00
Wednesday, Nov. 13	Coffee and Chat	1 pm – 4 pm	TCRC	Donation
Thursday, Nov. 14	Stretch and Strengthen Yoga	9 am – 10 am	YECC	\$10.00
Thursday, Nov. 14	Bus Trip: Cow Patti Theatre	9 am – 5:30 pm	Off-site	\$85.00
Thursday, Nov. 14	Cribbage	9:30 am – 11:30 am	YECC	\$2.00
Thursday, Nov. 14	Golden Gloves	10:15 am – 11:15 am	YECC	\$10.00
Thursday, Nov. 14	Paper Quilling Group	12 pm – 2 pm	YECC	\$2.00
Thursday, Nov. 14	Zumba Gold	12:45 pm – 1:45 pm	YECC	\$10.00
Thursday, Nov. 14	Pickleball	1 pm – 3 pm	YMCA	\$3.00
Thursday, Nov. 14	Arizona Ten	1 pm – 4 pm	BQCL	\$2.00
Friday, Nov. 15	Euchre	9:30 am – 11:30 am	YECC	\$2.00
Friday, Nov. 15	Art Group	9:30 am – 12 pm	YECC	\$2.00
Friday, Nov. 15	Knitting/Stitching Group	11:30 am – 3 pm	YECC	\$2.00
Friday, Nov. 15	ESSETRICS for Seniors	1 pm – 1:45 pm	YECC	\$10.00

[Click here for our Fall 2019 Program Guide.](#)

**Please Note:**



**Registration Deadlines**

The Christmas luncheon is full. Please let us know if you would have liked to attend so that we can plan for adequate space in the future.  
 Cow Patti – Last-minute seats available  
 Nov. 15 – Opry Gold at Beaver Regional Arts Society  
 Nov. 21 – Christmas Greenhouses  
 Nov. 22 – November luncheon deadline  
 Nov. 22 – Candlelight Christmas

Thank you to everyone who helped organize the Blue Quill Open House and to those who engaged in conversation with Councillor Knack.

We are now firming up the 2020 schedule and would love to hear from you about program preferences after seeing our new space. Contact the program coordinator [here](#).

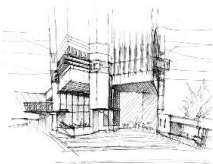


A  
♥



♥  
V

### Stay Connected:



### Volunteers:



November 11 - 15, 2019

Please note that mahjong and bridge players are opening beginner tables for their Wednesday meetings during November and December. These groups are casual and friendly with members who have varying experience. Stop in and learn something new without pressure.

Arizona Ten is a newer card game for SWESA members and is simple, fun and very flexible. If you are unable to stay for the entirety of the scheduled play, that's okay! This game is casual, and players can help you learn quickly. Drop by Blue Quill on Thursdays.

Did you miss the lunch and a movie trip to Rivera Riverbend but were interested in booking a tour and a free lunch? Call Barbara, sales consultant, at (780) 391-3873.

### Remembrance Day

There are several ceremonies taking place throughout the city. For senior centre events, visit the Edmonton Seniors Coordinating Council website [here](#). Please note that SWESA will be closed on Monday, November 11.

### Wild Rose Old Tyme Fiddlers Association: Jam and Dance

Musicians, dancers and spectators are invited to listen to good old-time music. Instruments include fiddles, accordions, mandolins, and guitars. For more information, call 780-906-6862 or visit the website [www.wildrosefiddlers.org](http://www.wildrosefiddlers.org).

**When:** Mondays from 7 pm – 10 pm

**Location:** Pleasantview Community Hall (10860 - 57 Avenue)

**Cost:** \$5

### Edmonton's Architectural Heritage through Urban Sketching

This exhibit by members of Urban Sketchers Edmonton and curated by Marlena Wyman, Edmonton's 5th Historian Laureate, opens November 20 at the Prince of Wales Armories. [Read all about it here!](#)

### Petrolia Seniors Lunch and Program

Join Petrolia Seniors for Musical Entertainment and Carol Sing with "The Brail Tones" directed by Susan Farrell. The meal will include a full turkey dinner with all the trimmings.

**Date:** Tuesday, December 10 from 11:45 am – 2 pm

**Location:** Greenfield Community Hall (3803 - 114 Street)

**Cost:** \$25 Call Betty to register at Betty 780-434-0711

### Front Desk Volunteers

We are looking specifically for folks who are available on Wednesday mornings to man our front desk. If you are interested in learning more, please contact Emily, our front desk coordinator, [here](#).

### Are You or a Family Member a Veteran?

The SWESA lunch bunch is planning to commemorate the sacrifices that Canadians made in armed conflicts, including World Wars I and II. If you have small memorabilia items that we could borrow for the luncheon, please contact Christina [here](#).